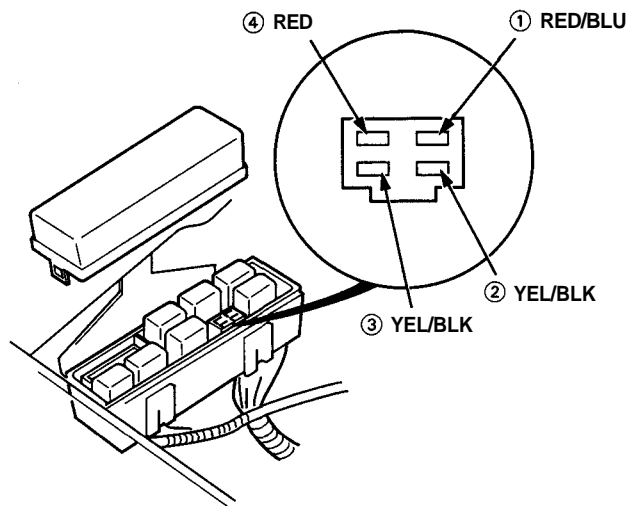
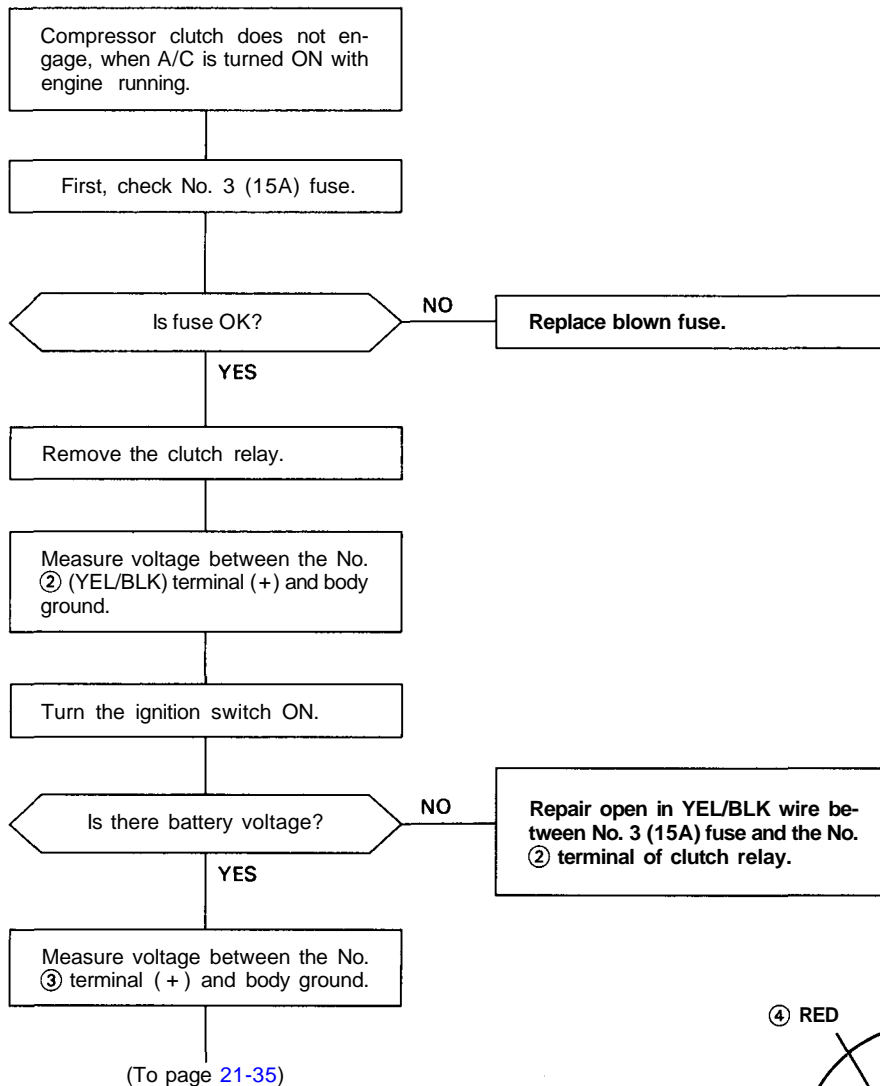
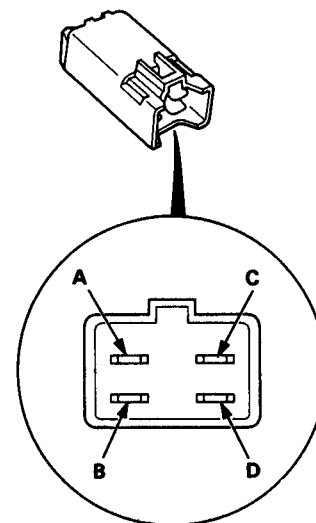
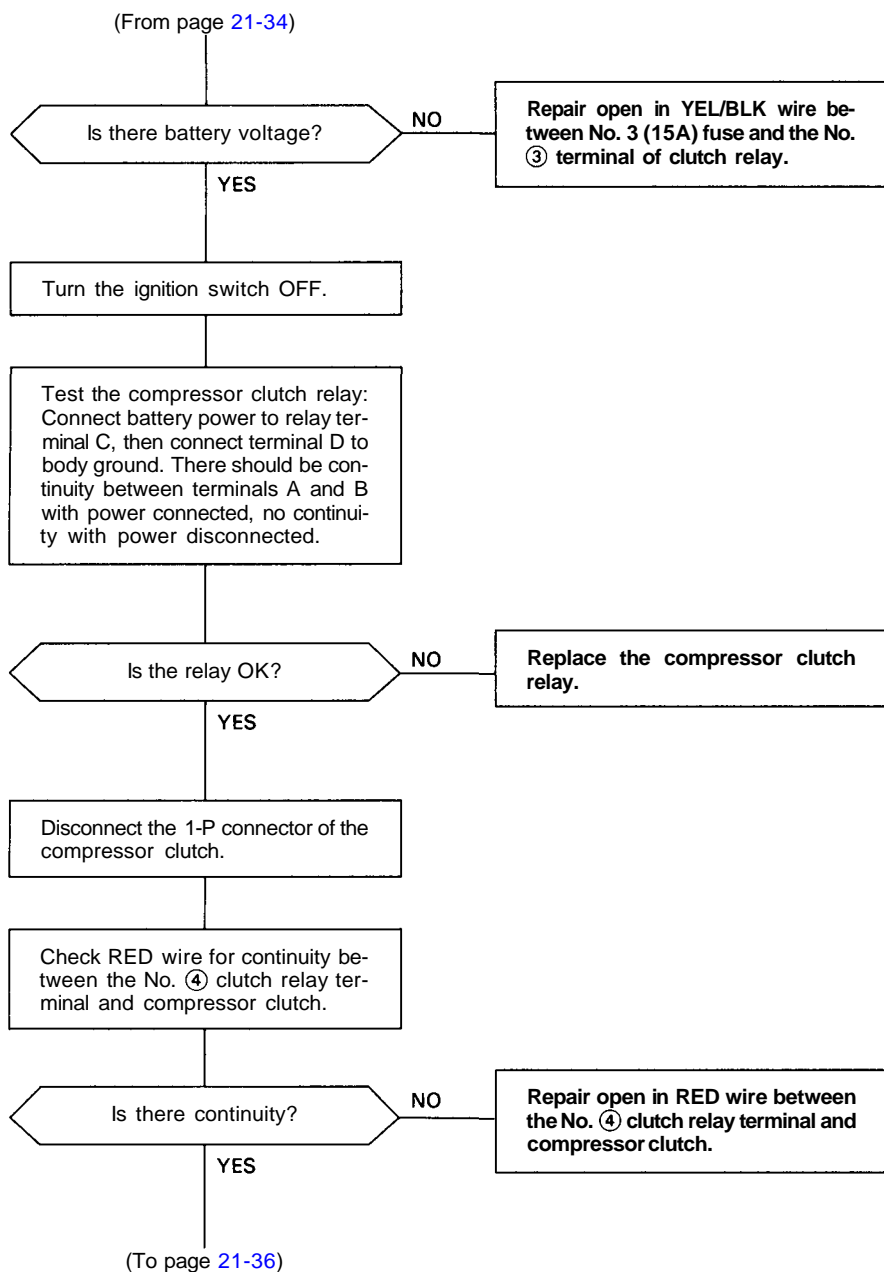


# Troubleshooting

## A/C Compressor





(cont'd)

# Troubleshooting

## A/C Compressor (cont'd)

(From page 22-35)

Connect a jumper wire between the No. ③ terminal of clutch relay and, the No. ④ terminal of clutch relay.

Reconnect the 1-P connector of the compressor clutch.

Turn the ignition switch ON.

Does compressor clutch engage?

NO

Replace the compressor clutch.

YES

Turn the ignition switch OFF.

Remove the ECU of panel.

Disconnect the 4 connectors from ECU.

(To page 21-37)



(From page 21-36)

Disconnect the ECU connectors and connect the ECU test harness.

Turn the ignition switch ON.

Turn the A/C switch OFF.

Measure the voltage between the A15 (+) of ECU test harness and body ground (-).

Is there battery voltage?

NO

Repair open in the RED/BLU wire between the clutch relay and ECU terminal.

YES

Using a jumper wire, connect C3 test harness terminal to body ground.

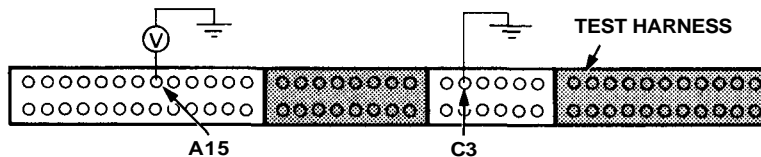
Does compressor clutch engage?

NO

Substitute a known-good ECU and recheck. If symptom/indication goes away, replace the original ECU.

YES

(To page 21-38)



(cont'd)

# Troubleshooting

## A/C Compressor (cont'd)

(From page 21-37)

Turn the ignition switch OFF.

Disconnect the 12-P connector at the fan control unit.

Ground the BLU/BLK wire at the 12-P fan control unit connector.

Turn the ignition switch ON.

Does the compressor clutch engage?

NO

Repair open in the BLU/BLK wire between the fan control unit and ECU.

YES

Check for voltage at the YEL/BLK wire of the 12-P fan control unit connector.

Is there battery voltage?

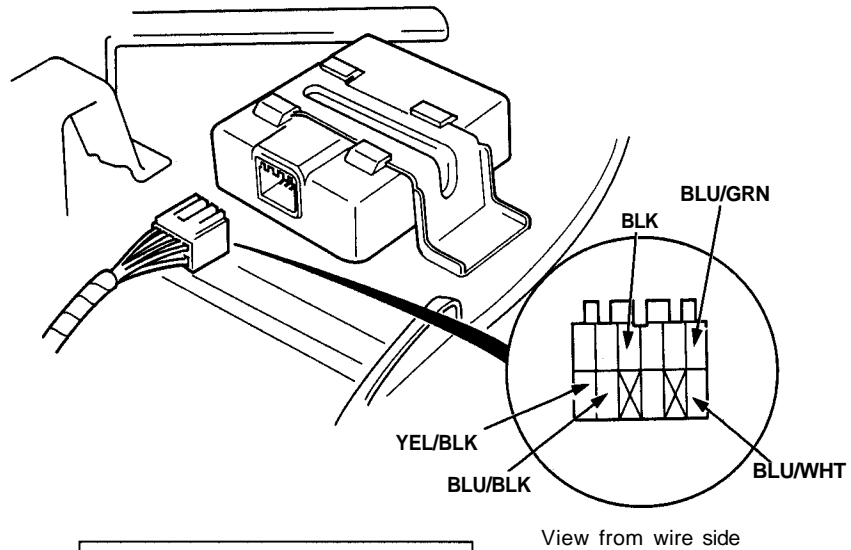
NO

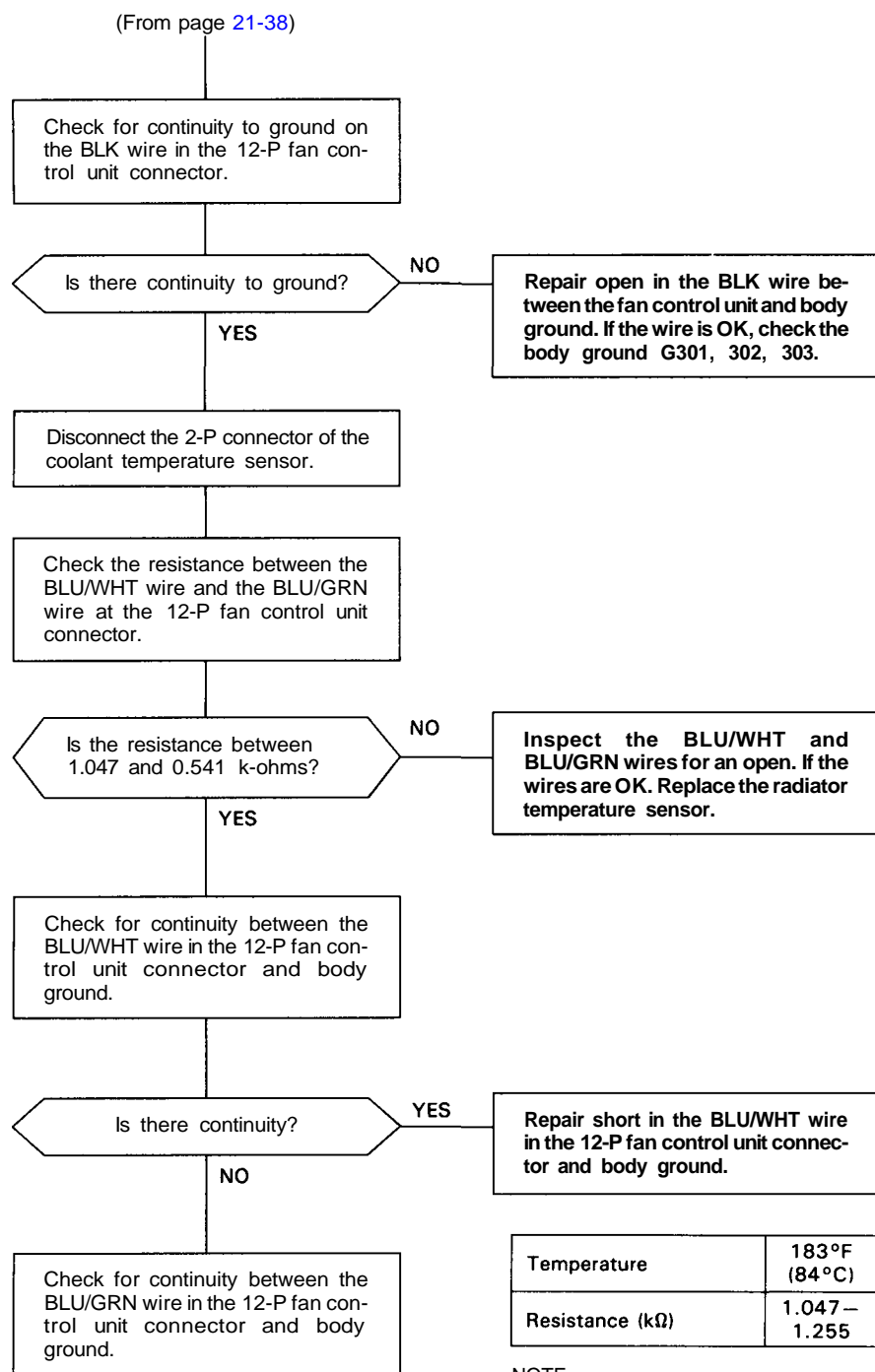
Repair open in the YEL/BLK wire between the fan control unit and the No. 3 (15A) fuse.

YES

Turn the ignition switch OFF.

(To page 21-39)





Temperature	183°F (84°C)	194°F (90°C)	230°F (110°C)
Resistance (kΩ)	1.047 – 1.255	0.872 – 1.024	0.489 – 0.541

NOTE:  
The resistance of the thermistor decreases as the coolant temperature.

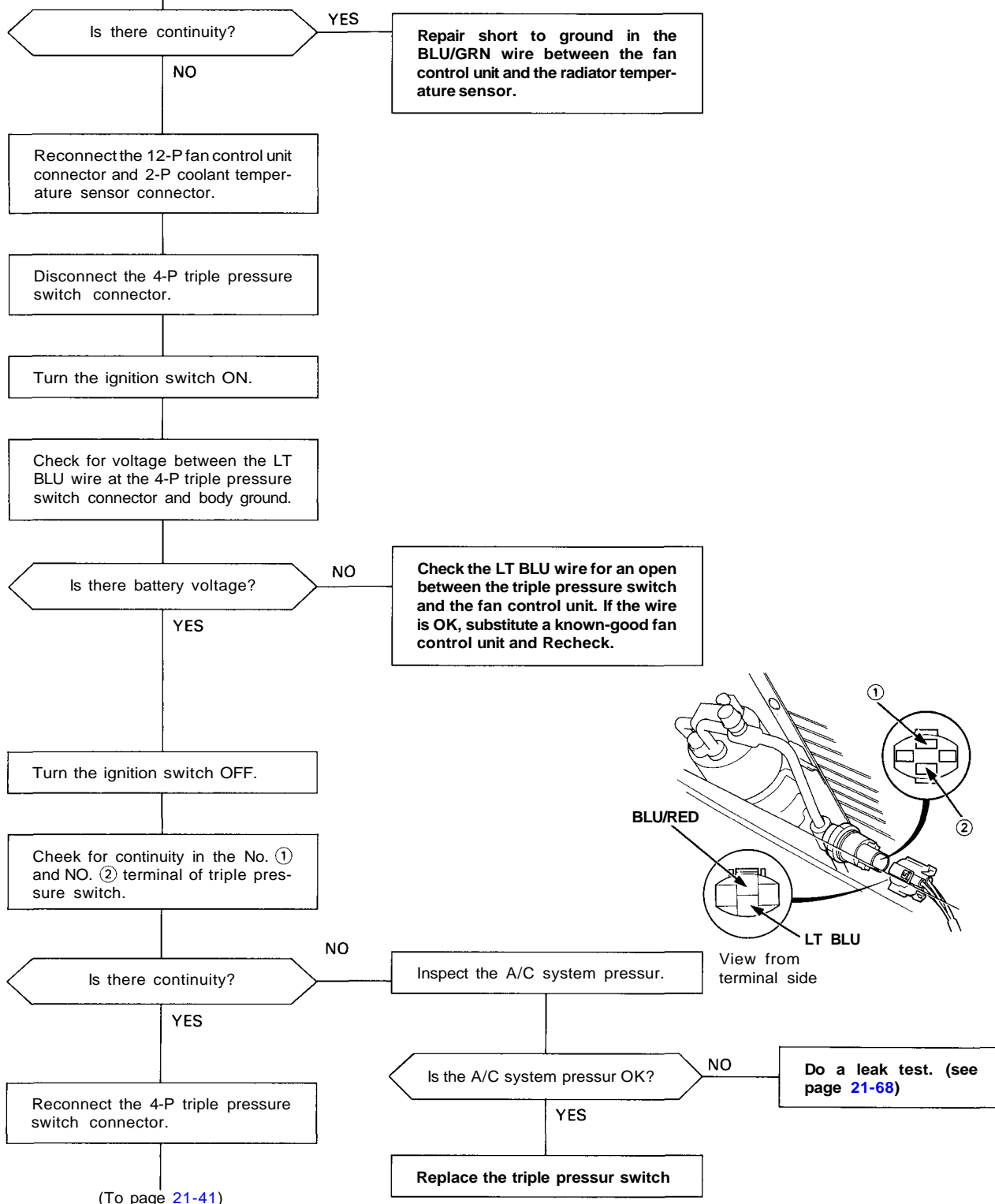
(To page 21-40)

(cont'd)

# Troubleshooting

## A/C Compressor (cont'd)

(From page 21-39)





(From page 21-40)

Remove the control unit.  
(page 21-13)

Disconnect the 22P control unit  
connector.

Turn the ignition switch ON.

Check the voltage between the  
BLU/RED wire in the 22-P control  
unit connector and body ground.

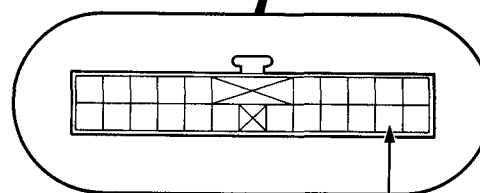
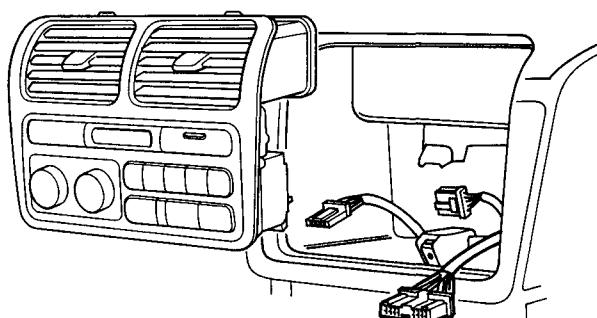
Is there battery voltage?

NO

Repair the open in the BLU/RED  
wire between the control unit and  
the triple pressure switch.

YES

Replace the control unit.



View from wire side

No. 21 BLU/RED